

DIGITAL INDICATOR



2103-10

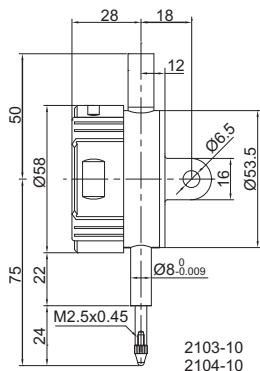


2104-25

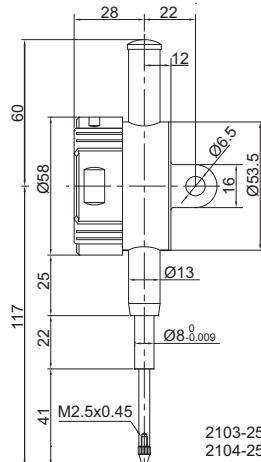


2103-50

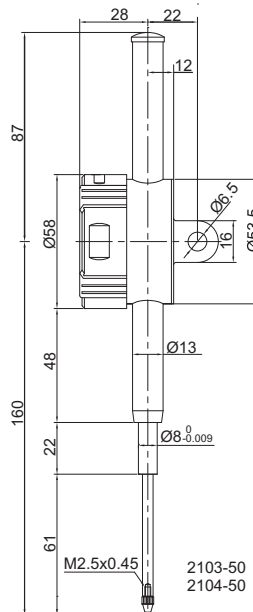
Unit: mm



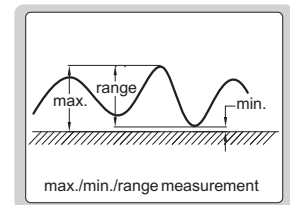
2103-10
2104-10



2103-25
2104-25



2103-50
2104-50



Resolution 0.001mm/0.00005"

Code	Range	Accuracy(f_{ges})	Hysteresis(f_u)	Remark
2103-10	12.7mm/0.5"	5 μ m	2 μ m	lug back
2103-25	25.4mm/1"	5 μ m	3 μ m	lug back
2103-50	50.8mm/2"	6 μ m	3 μ m	lug back
2103-10F	12.7mm/0.5"	5 μ m	2 μ m	flat back
2103-25F	25.4mm/1"	5 μ m	3 μ m	flat back
2103-50F	50.8mm/2"	6 μ m	3 μ m	flat back

Resolution 0.01mm/0.0005"

Code	Range	Accuracy(f_{ges})	Hysteresis(f_u)	Remark
2104-10	12.7mm/0.5"	20 μ m	10 μ m	lug back
2104-25	25.4mm/1"	20 μ m	10 μ m	lug back
2104-50	50.8mm/2"	30 μ m	10 μ m	lug back
2104-10F	12.7mm/0.5"	20 μ m	10 μ m	flat back
2104-25F	25.4mm/1"	20 μ m	10 μ m	flat back
2104-50F	50.8mm/2"	30 μ m	10 μ m	flat back

- Reading in digit and analog
- Display can be rotated by 320°
- Button function: tolerance Go and No-Go display, data preset, measuring direction change, max./min./range measurement, inch/metric conversion, absolute/incremental measurement
- CR2032 battery, automatic power off
- USB data output
- Optional accessory: SPC cable (page A1-A2), backs (page F15), contact points (page F11-F14)